



**JENNCHEM**

**PRODUCT CATALOGUE**

## MISSION STATEMENT

---

### MISSION

To be a responsible employer and leading innovator of sustainably manufactured, and installed, high quality products for mining, industrial and infrastructure markets. Accountable to our stakeholders by creating employee and customer excellence, and positive outcomes for all



## Contents

Mission Statement .....	2
Contacts .....	4
Accreditations .....	5
<b>STANDING SUPPORTS</b>	
Pumpable Cribs, Surface to Seam Application .....	7
Standard Capacity and High Capacity ACS Props .....	8
400mm and 600mm ACS Prop Pans .....	9
<b>SPECIALITY GROUTS AND CEMENTS</b>	
J-Crib - 2 Component Grout Blend .....	11
J-Seal Grout .....	12
J-Fill Grout .....	13
JURR Grout .....	14
J-Plug Grout .....	15
J-Crete (FS) Sprayable Dry Mix Shotcrete .....	16
Bottom-Up 100 MPa Grout .....	17
Top-Down 80 MPa Grout .....	18
Top-Down 80 Plus Grout .....	19
Jennchem Mineral Sponge .....	20
<b>STRUCTURAL SUPPORT AND THIN SPRAY LINERS</b>	
TL-40 - Thin Sprayed Liner .....	22
<b>POLYMERIC CHEMICALS</b>	
116T - 2 Component Modified Silicate Resin .....	24
JennSil - 2 Component Non – Foaming Urea Silicate Resin .....	25
JennThix 2 Component Thixotropic Urea Silicate Resin .....	26
JennFoam - 2 Component High Expansion Phenolic Foaming Resin .....	27

## Contacts

### Nathan Phie

Jennchem QLD Manager  
E-mail: [nphie@jennchem.com.au](mailto:nphie@jennchem.com.au)  
Mobile: 0427 209 641

## Manufacturing and Administration

### Head Office and Plant

40-44 Anzac Avenue  
Smeaton Grange NSW 2567  
Phone: 02 4648 7537  
Fax: 02 4648 7555

### Gareth King

Managing Director  
E-mail: [gking@jennmar.com.au](mailto:gking@jennmar.com.au)  
Mobile: 0418 687 371

### Matthew Berry

Commercial Manager  
E-mail: [mberry@jennmar.com.au](mailto:mberry@jennmar.com.au)  
Mobile: 0408 269 658

### Armand du Plessis

National Quality Manager  
E-mail: [aduplessis@jennmar.com.au](mailto:aduplessis@jennmar.com.au) Mobile: 0417 905 046

### Blair Moses

National Safety & Environmental Manager  
E-mail: [bmoses@jennmar.com.au](mailto:bmoses@jennmar.com.au)  
Mobile: 0455 612 821

### Queensland Branch

50-52 Southgate Drive Paget QLD 4740  
Phone: 07 4952 8743  
Fax: 07 4952 8777

### Darcie Strack

Administration Officer  
Email: [admin@jennchem.com.au](mailto:admin@jennchem.com.au)

### Luke Cox

Maintenance Coordinator  
Email: [lcox@jennchem.com.au](mailto:lcox@jennchem.com.au)  
Mobile: 0438 078 482

### Kevin Phie

Warehouse Coordinator  
Email: [kphie@jennchem.com.au](mailto:kphie@jennchem.com.au)  
Mobile: 0408 794 963

### NSW Branch

9 Gallipoli St Smeaton Grange NSW 2567  
Phone: 02 4648 7551  
Fax: 02 4648 7555

### Joel Rodricks

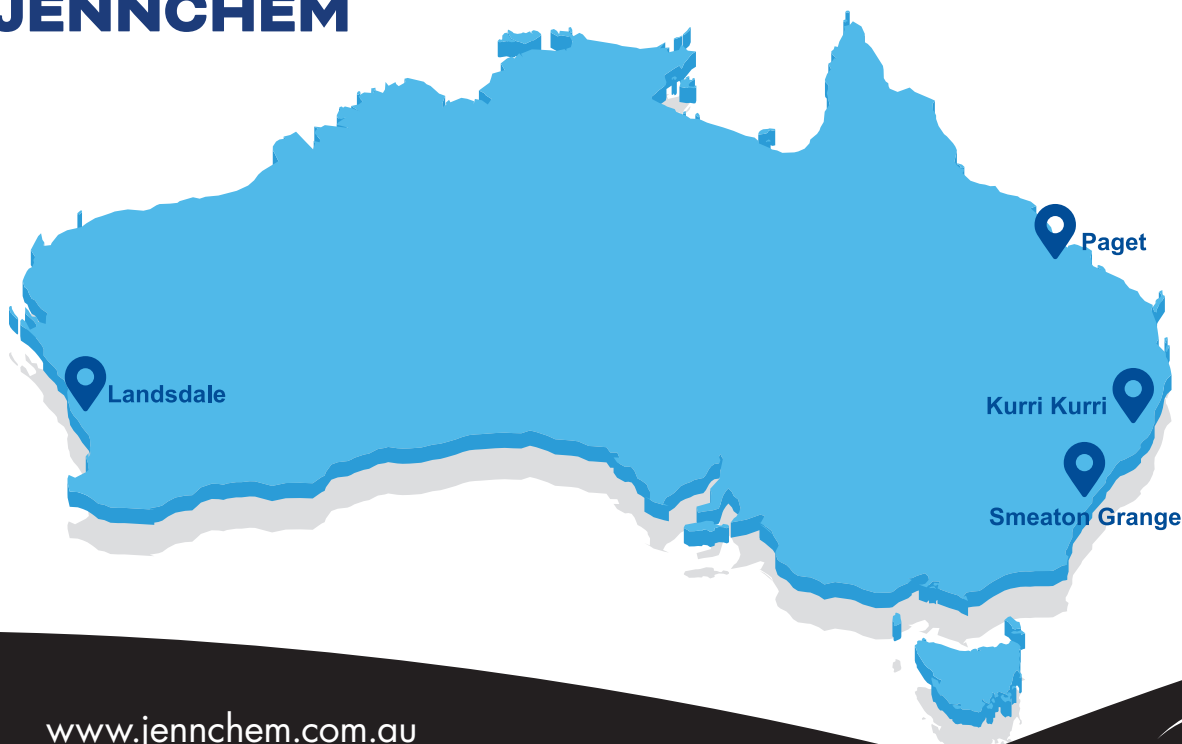
Development Chemist  
Email: [jrodricks@jennchem.com.au](mailto:jrodricks@jennchem.com.au)  
Mobile: 0427 056 447

### Kurri Kurri Warehouse

43 Wermol Street Kurri Kurri NSW 2327  
Phone: 02 4936 5200

### WA Warehouse

84 Furniss Rd Landsdale WA 6065 Phone: 08 94089900



# Accreditations

JENNCHEM Australia is certified as compliant with the following standards:



OHS  
ISO 45001



Quality  
ISO 9001



Environment  
ISO 14001



# STANDING SUPPORTS



# Pumpable Cribs

## Pumpable Cribs, Surface to Seam Application

Jennchem is the leader in surface to seam automated grout conveying technology. The Jennchem surface to seam system was originally designed in 2009 for the installation of pumpable cribs in underground coal mines. This system has now evolved into the most reliable, safe and productive unit of its kind boasting install rates of over 8 pumpable cribs per hour.

### Features:

- Cost Effective.
- Cylinder shape and small diameter allows for less ventilation restriction than square type standing supports.
- Custom pumpable crib bag sizes can be manufacture to suit any application.
- System designed to pump distances up to 5km.
- Minimises diesel equipment requirements.
- Automated batching process reduces manual labour and in turn reduces the risk of manual labour type injuries.
- All pumpable crib models load tested at 3.6m height for Quality Assurance.
- Pumpable crib designed with a pillow at the top to ensure complete contact to the roof ensuring even load bearing capability.
- J-Crib Grout coupled with Jennchem's pumpable crib bag design allows for controlled yielding under ground pressure.
- Rapid gelling characteristics of the J-crib material allows for fast no mess installation.
- High early strength gain of Jennchem's J-Crib grout provides positive support from the point of install.
- Surface to seam application allows easy installation of standing support for remote areas of the mine where material handling is restricted.



### Applications:

#### Coal Mining:

- Tailgate standing supports
- Break off standing supports
- Bleeder road standing supports
- Support for false roofs
- Longwall seal standing support
- Pre-driven recovery road supports

#### Packaging:

- 10 crib bags per pallet



# ACS Props and Pans

## Standard Capacity and High Capacity ACS Props

Jennchem's ACS Props are designed for applications where instant positive support is required. The ACS prop has been designed with a comprehensive range of load capacities and attachments to suit a variety of load support applications.

### Features:

- Light weight
- Small profile provides minimal restriction on ventilation
- Simple, safe and reliable installation
- No mechanical aid required for installation
- Cost effective
- 500mm height extension
- Instant roof and floor support
- Known, reliable, engineered product



### Standard Capacity ACS Props

Part Number	Unextended Height (M)	Extended Height (M)	Typical Load Capacity (Tonnes)
PROPSC1.7	1.2	1.7	50T
PROPSC2.2	1.7	2.2	50T
PROPSC2.7	2.2	2.7	50T
PROPSC3.2	2.7	3.2	50T
PROPSC3.7	3.2	3.7	45T
PROPSC4.2	3.7	4.2	40T

### High Capacity ACS Props

Part Number	Unextended Height (M)	Extended Height (M)	Typical Load Capacity (Tonnes)
PROPHC1.7	1.2	1.7	100T
PROPHC2.2	1.7	2.2	100T
PROPHC2.7	2.2	2.7	90T
PROPHC3.2	2.7	3.2	85T
PROPHC3.7	3.2	3.7	80T





# ACS Props and Pans

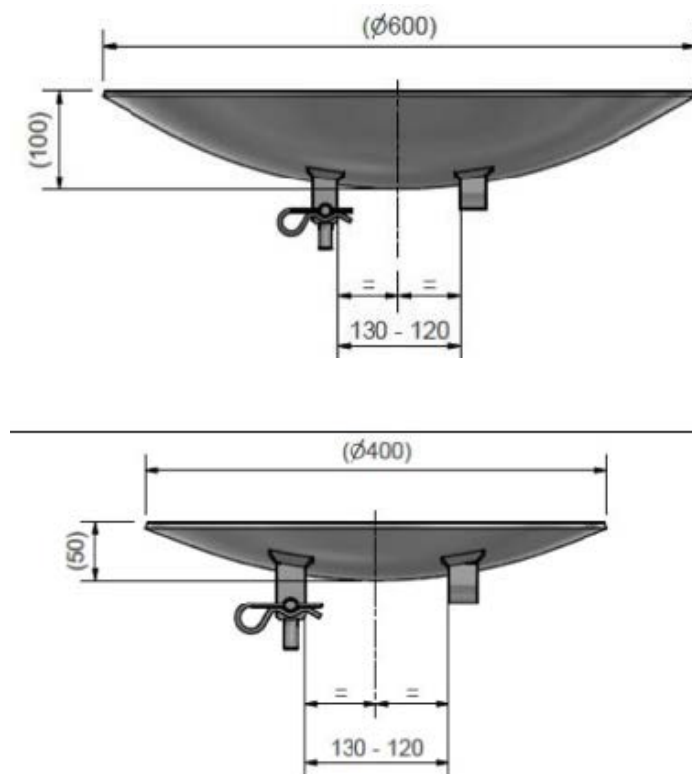
## 400mm and 600mm ACS Prop Pans

Jennchem's ACS Prop Pans are designed exclusively for use with the Jennchem ACS Prop. They are designed to increase the footprint on the roof and floor and also to act as a visual marker for convergence.

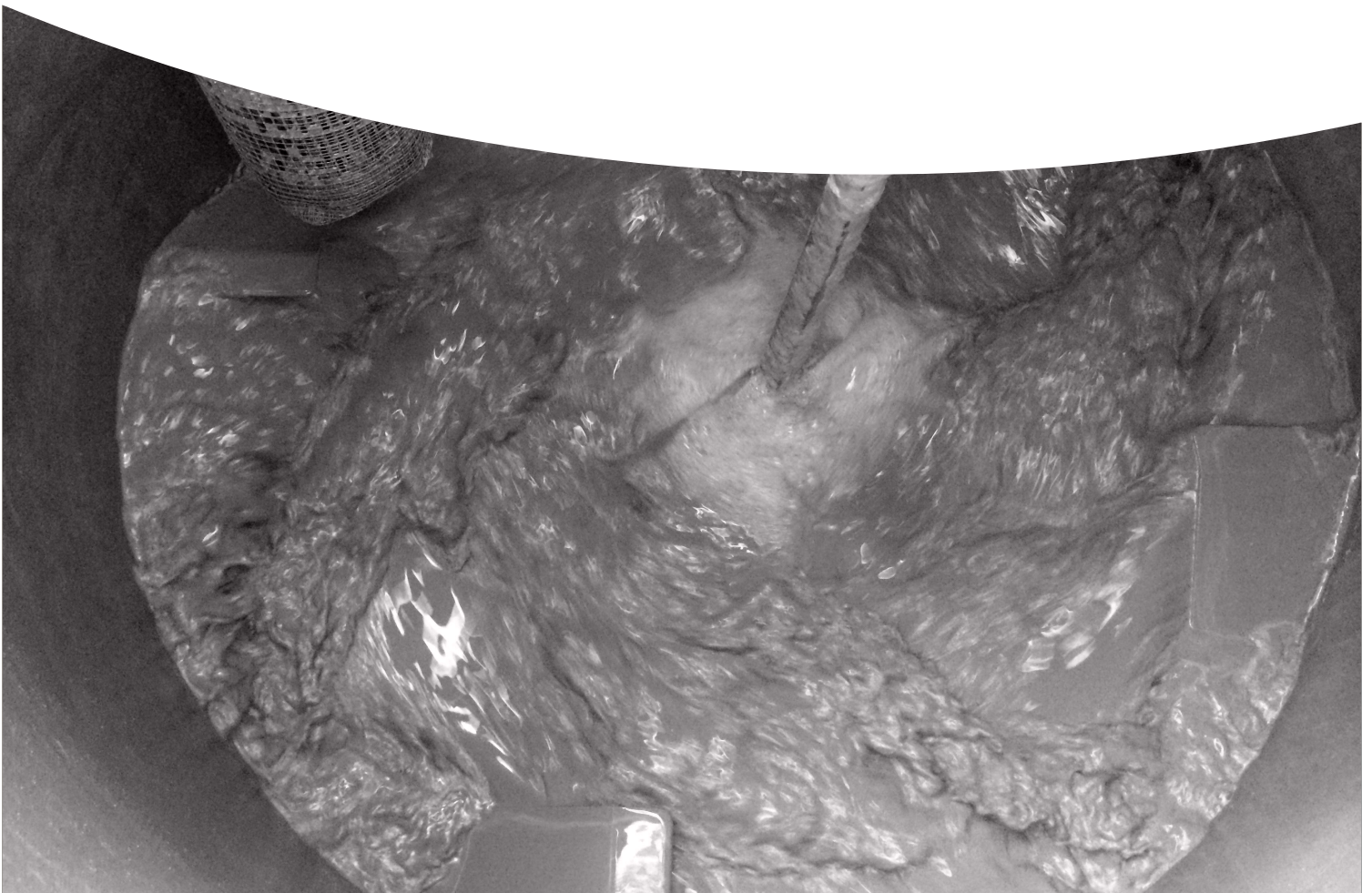
### Features:

- Specifically designed for use with Jennchem ACS props
- Increases contact with Roof and Floor
- Provides a visual marker for convergence

Part Number	Description
400MMACSPAN	400mm Diameter ACS Prop Pan
600MMACSPAN	600mm Diameter ACS Prop Pan



# **SPECIALITY GROUTS AND CEMENTS**



# Specialty Grouts and Cements

## J-Crib - 2 Component Grout Blend

Jennchem's J-Crib Grout combines cement, silicate and water to create an extremely fast gelling, high early strength grout purpose built for the filling of Jennchem's J-Crib pumpable crib bags. J-Crib Grout is batched and delivered utilising Jennchem's state-of-the-art pumping equipment both from in-seam and surface to in-seam.

### Features:

- Dustless application
- Low viscosity
- Great pumpability can be pumped up to 5kms
- Fast gelling
- High early strength
- Non-Flammable
- Non-Toxic
- Surface to in-seam application
- In-seam application

### Applications:

- Various water to powder ratios available at the push of a button
- Two component grout, mixed at the point of install
- J-Crib Pumpable Crib fill material
- Void filling
- Back filling
- Pumpable Dam fill material

### Packaging:

- Bulk tankers
- 20kg bags
- 1200kg bulk bags

### Technical Data – J-Crib - 2 Component Grout Blend

VISCOSITY ( Marsh cone ) :	28-32 seconds
Gel time :	<40 seconds

### UNIAXIAL COMPRESSIVE STRENGTH (MPa ) @ W/P 1.2:

3 days	7 days	28 days
4.5	6	7

### UNIAXIAL COMPRESSIVE STRENGTH (MPa ) @ W/P 1.4:

3 days	7 days	28 days
4	5	5.5



# Specialty Grouts and Cements

## J-Seal Grout

Jennchem's J-SEAL is a pumpable two-component cementitious grout for use in rated plug seals and void filling applications in underground mining. It has a high volume output meaning that significantly less material is required to be mixed with water compared to conventional grouts. J-SEAL is highly pumpable and is mixed at the place of install which allows for greater pumping distance, including remote pumping underground and surface to seam applications.

### Features:

- High volume output
- Typically 340 - 440kg produces 1 cubic metre of grout
- Non-shrink, slightly expansive
- Low alkali, safe to handle
- Rapid gelling for ease of placement
- Yields to ground movement
- Two component grout mixed at the point of application
- Great pumpability can be pumped up to 5kms
- High final strength >15MPa
- Extremely durable

### Applications:

- Mixing - High shear colloidal mixer
- Pumping - 3 stage progressive cavity pump

### Packaging:

- 1 or 1.2 tonne bulk bags
- 20kg plastic bags (56 per pallet)

### Technical Data – J-Seal Grout

Water:Power	Fresh Wet Density Mass per m3 (Kg)	Gel Time (Minutes)	Powder Mass per m3 (Kg)
1.5:1	1300-1400	3-5	550-650
2:1	1200-1300	3-5	400-440
2.5:1	1160-1260	3-5	340-360

### Uniaxial Compressive Strength (MPa)

Water:Power	3 days	7 days	28 days
1.5:1	4	7	15
2:1	2.5	3.3	7.5
2.5:1	1	1.5	4.5

# Specialty Grouts and Cements

## J-Fill Grout

Jennchem's J-FILL is a pumpable cementitious grout for use in ventilation devices and void filling applications for ground control in underground mining. Jennchem J-Fill has a high volume output which means that significantly less material is required to be mixed with water compared to conventional grouts.

### Features:

- High volume output, typically 340 – 440kg produces 1 cubic metre of grout
- Non-shrink
- Low alkali, safe to handle
- Rapid gelling for ease of placement
- Yields to ground movement
- A continuous placer pump is required.

### Application:

- A continuous placer pump is required. Consult Jennchem personnel for installation instructions

### Packaging:

- 20kg plastic bags (56 per pallet)
- 1 tonne bulk bags



### Uniaxial Compressive Strength\* (MPa)

Water:Powder	1 Day	7 Days	28 Days
2:1	0.6	3.3	7.5
2.5:1	0.4	1.5	4.5

Water:Power	Fresh Wet Density Kg/m3	Gel Times (minutes)	Kg Powder/m3
2:1	1200-1300	4-8	400-440
2.5:1	1160-1260	6-10	340-360

# Specialty Grouts and Cements

## JURR Grout (Jennchem Underground Roadway Repair)

Jennchem JURR Grout is a specially formulated fast-setting concrete designed for the mining and tunnelling industries. JURR Grout is designed specifically for demanding applications where quick return to service is required, or where traditional concrete mixing equipment is unavailable or impractical. JURR Grout is formulated to absorb water and gain strength rapidly with no mixing. JURR Grout is ideal for rehabilitating underground roadways and filling mud holes and swillies. JURR Grout is a safer, more permanent solution than temporary bridges or traditional fill methods.

### Features:

- Extremely fast setting
- Simple application
- Quick return to service
- Safe to use
- Minimal dust make
- No mixing required
- Packaged in 1 tonne or 20kg bags
- Increases underground development production in wet conditions
- Fit for purpose QDS applicator available

### Packaging:

- 20kg bags. (56 per pallet)
- 1 tonne bulk bags

### Shelf Life:

- One year when stored in cool dry conditions

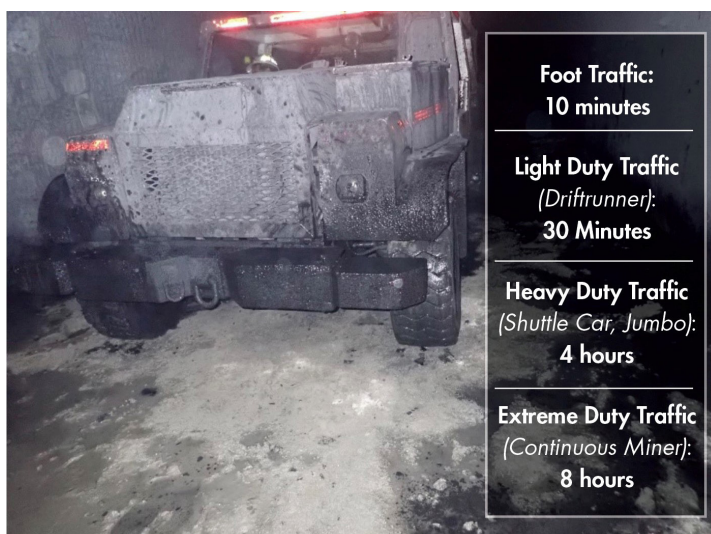
### Yield:

- 20kg: Approx. 15.4 litres
- 1000kg: Approx. 0.77m<sup>3</sup>

### Set / Cure Time

Foot Traffic	Light Duty Traffic (Drifrunner)	Heavy Duty Traffic (Shuttle car, Jumbo)	Extreme Duty Traffic (Continuous miner)
10 minutes	30 minutes	4 hours	8 hours

Note: Hot materials (and/or water) will accelerate set times and strength gain. Cold materials will slow set times and strength gain. pH and chemistry of water may affect set time and strength gain.



## Specialty Grouts and Cements

### J-Plug Grout

Jennchem's J-Plug Grout is a pumpable cementitious grout designed for use in void filling applications and plugging of gas drainage holes.

#### Features:

- High volume output
- Non-shrink.
- Thixotropic
- Rapid setting

#### Application:

- Use a high shear mixer and potable water
- Water addition - 8.5L per 15Kg bag
- Once mixed the product is rapid setting
- Wash all equipment and pumping lines immediately after use

#### Yield:

- One 15 Kg bag will typically yield 12.5 litres of grout

#### Packaging:

- 15Kg bags - 72 bags per pallet



#### Technical Data – J-PLUG GROUT

Water:powder	Pot Life	Initial set time	Wet Density
0.56 :1	15-20 mins	30-40 mins	1850 Kg/m <sup>3</sup>

#### UNIAXIAL COMPRESSIVE STRENGTH (MPa)

1 day	7 days	28 days
3.5	10	20

# Specialty Grouts and Cements

## J-Crete (FS) Sprayable Dry Mix Shotcrete

Jennchem's J-Crete is a sprayable dry mix shotcrete for use in the construction of ventilation devices, strata stabilisation and remediation applications for ground control in underground mining.

J-Crete's rapid setting and high early strength characteristics allow for more efficient installation rates and earlier return to service. J-Crete can be applied through any of the industry approved dry shotcreting equipment.

### Features:

- Rapid setting
- High early strength
- Minimum rebound
- Chloride free (non-corrosive to steel)
- Non-Flammable
- Water resistant

### Packaging:

- 20kg bags
- 1000kg, 1200kg bulk bags

### Application:

- Rated and non-rated ventilation control devices
- Remediation work
- Strata stabilisation

### Application Equipment:

- LOVA Pump
- Piccola Pump

	UCS (MPa)	Bond Strength (MPa)	Flexural Strength (MPa)
4 Hours	15	-	-
3 Days	40	21	4.5
7 Days	60	-	6.5
28 Days	75	-	8

**Wet density:** 2,200 kg/m<sup>3</sup>





## Specialty Grouts and Cements

### Bottom-Up 100 MPa Grout

Bottom-Up-100 is a pumpable cementitious grout for use as a bonding agent between a reinforcing member and the borehole wall in ground support systems. The product is packaged in durable water proof 20 kg bags for use in remote and harsh underground mining environments. The product is designed to minimise the risk of hard lumps entering pumping injection systems, which in turn minimises hazardous pressurisation and blockages.

#### Features:

- High strength 100 MPa cable bolt grout for “bottom-up” grouting
- Ready to use, mix with water and pump
- Excellent pumpability
- Non shrink, unique expansion system compensates for shrinkage
- Typically used with Bowen cables, 15.2mm triple/twin-strand cable bolts and trusses

#### Packaging:

- Durable water proof 20kg bags for use in remote and harsh underground mining environments
- 56 bags per pallet, 1.2 tonne per pallet



Uniaxial Compressive Strength* (MPa)			
Water Addition	1 DAY	7 DAYS	28 DAYS**
5 litres/bag	60	100	105
6 litres/bag	55	90	100

\*UCS independent test results were obtained using 50 x 50mm cubes

\*\*28 day strength may vary between 85 MPa and 105 MPa depending on water content and testing methods utilised

Water Addition	5 - 6 litres per bag
Estimated Yield	12 - 13 litres per bag

## Specialty Grouts and Cements

### Top-Down 80 MPa Grout

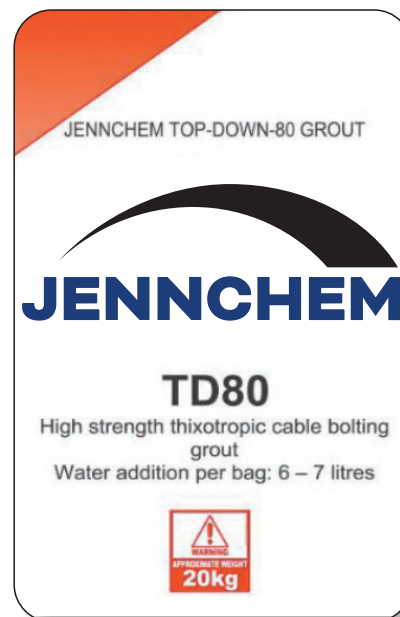
Top-Down-80 is a pumpable cementitious grout for use as a bonding agent between a reinforcing member and the borehole wall in ground support systems. The product is packaged in durable water proof 20 kg bags for use in remote and harsh underground mining environments. The product is designed to minimise the risk of hard lumps entering pumping injection systems, which in turn minimises hazardous pressurisation and blockages.

#### Features:

- High strength 80 MPa thixotropic cable bolt grout for “top-down” grouting
- Ready to use, mix with water and pump
- Non shrink, unique expansion system compensates for shrinkage
- Excellent pumpability
- Typically used with TG Bolt, Bulbed Superstrand and other “top-down” groutable cable bolts

#### Packaging:

- Durable water proof 20kg bags for use in remote and harsh underground mining environments
- 56 bags per pallet, 1.2 tonne per pallet



Uniaxial Compressive Strength* (MPa)			
Water Addition	1 DAY	7 DAYS	28 DAYS**
6 litres/bag	43	77	89
7 litres/bag	33	63	80

\*UCS independent test results were obtained using 50 x 50mm cubes

\*\*28 day strength may vary between 70 MPa and 90 MPa depending on water content and testing method utilised

Water Addition	6 - 7 litres per bag
Estimated Yield	13 - 14 litres per bag

## Specialty Grouts and Cements

### Top-Down 80 Plus Grout

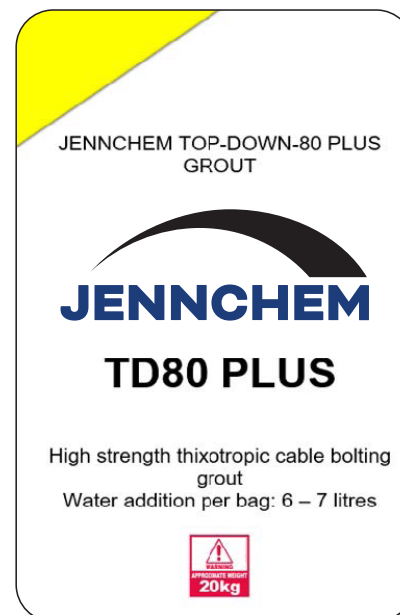
Top-Down-80PLUS is a pumpable cementitious grout for use as a bonding agent between a reinforcing member and the borehole wall in ground support systems. The product is specifically suited for long distance pumping up to 100 metres. TD80PLUS grout is packaged in durable water proof 20 kg bags for use in remote and harsh underground mining environments. The product is designed to minimise the risk of hard lumps entering pumping injection systems, which in turn minimises hazardous pressurisation and blockages.

#### Features:

- Highly thixotropic to enable top-down grouting
- High strength – 80 Mpa
- Excellent pumpability. Longer pumping distances achieved, up to 100 metres
- Shrinkage compensation maintains full grout contact between the ground support and borehole wall

#### Packaging:

- Durable water proof 20kg bags for use in remote and harsh underground mining environments
- 56 bags per pallet, 1.2 tonne per pallet



Uniaxial Compressive Strength* (MPa)			
Water Addition	1 DAY	7 DAYS	28 DAYS**
6 litres/bag	43	77	89
7 litres/bag	33	63	80

\*UCS independent test results were obtained using 50 x 50mm cubes

\*\* 28 day strength may vary between 70 MPa and 90 MPa depending on water content and testing method utilised

Water Addition	6 - 7 litres per bag
Estimated Yield	13 - 14 litres per bag
Fresh Wet Density	2000 kg/m <sup>3</sup>
Set Time	7 hrs
Expansion	1-3%

# Specialty Grouts and Cements

## Jennchem Mineral Sponge

Mineral Sponge is a calcium aluminate based product used as a binder to agglomerate dust or as a hardening agent to solidify sludge. Mineral Sponge improves waste management as conditions of storage and handling are simplified.

### Features:

- High water absorption (up to ten times by weight)
- Rapid setting and hardening
- Non-toxic and ecologically friendly for the environment
- Easy to use

### Applications:

- Absorption/solidification of wet areas in the underground environment

### Main Constituents:

- Al<sub>2</sub>O<sub>3</sub>, CaO, SiO<sub>2</sub>, Fe<sub>2</sub>O<sub>3</sub> + FeO, CaSO<sub>4</sub>

### Physical Properties:

- Aspect : Powder
- Colour : Grey
- Bulk density : 1150 kg/m<sup>3</sup>
- Odour : None
- Inflammable : No
- Explosive : No
- pH in Water : 11,5 - 12,5

### Specifications

Bulk density	1150kg/m <sup>3</sup>
pH in Water	11.5– 12.5
Absorption Capacity (kg)	10:1

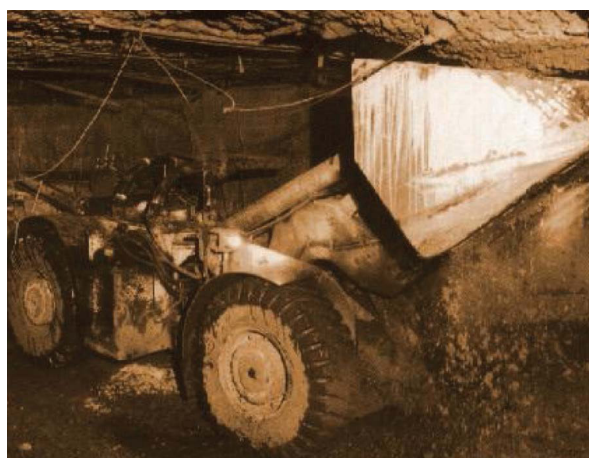
### Deliveries and Storage Conditions:

#### Standard packaging:

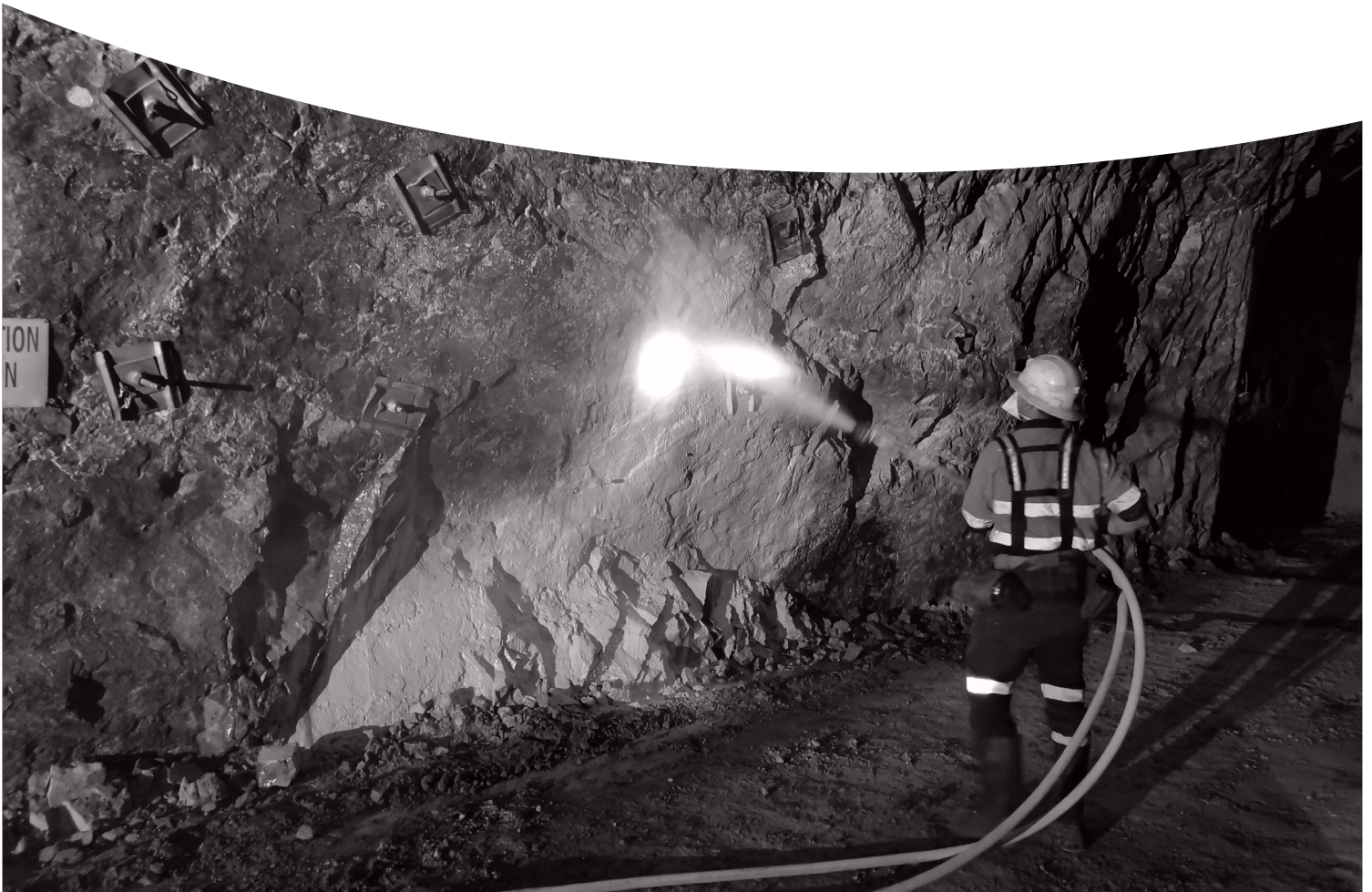
- 20kg Bags.
- 1 tonne bulk bags

#### Storage life:

- 6 months maximum, in dry conditions,
- out of direct sunlight



# STRUCTURAL SUPPORT AND THIN SPRAY LINERS



# Structural Support and Thin Spray Liners

## TL-40 - Thin Sprayed Liner

2 part spray applied polymer modified membrane for surface sealing and weathering protection of rock and coal substrate.

### Features:

- Rapid setting
- High early strength development
- Excellent bond to substrate
- Easily spray applied
- Dustless application
- Can be pumped long distances
- Non toxic
- Low VOC

### Packaging:

- Part A – 20kg bags
- Part B – 20L Pales

### Application:

- Stabilisation of rock and coal strata
- Flexible surface support
- Temporary or preliminary slope protection
- Non rated ventilation control devices
- Corrosion protection for steel standing support
- Surface support before shotcrete application
- To reduce rock weathering
- Minimise hard rock bursting
- Pillar/Rib Support
- Abutment for low pressure injection

### Technical Data – TL-40 - Thin Sprayed Liner

Typical Application Thickness	2 – 12mm
Maximum Thickness	40mm
Density	1900kg/m <sup>3</sup>
Bond Strength @ 7 days	
Concrete	>1.7Mpa
Coal	>Substrate Failure
Compressive strength	50Mpa @ 28 days
Tensile Strength @ 7 days	>3.5 Mpa
Flexural Strength	>7Mpa
Elongation at break	60%
Flammability	Self Extinguishing

### Mix Design – TL-40 - Thin Sprayed Liner

Part A	4 x 20kg bag
Part B	1 x 20L polymer
Product Volume	42 Litres
Applied Thickness	5mm
Coverage	8.4m <sup>2</sup>



# POLYMERIC CHEMICALS



## 116T – 2 Component Modified Silicate Resin

116T is a two-component, silicate modified, solvent-free, semi-flexible polyurethane injection resin. It is specifically designed for rapid strata consolidation in poor soft ground geologies in Coal, hard rock mines and tunnels, providing structural integrity, strength and some flexibility. Its superior performance allows 116T to be used as a Chemical “Rock Bolt Resin” and on-site tests have demonstrated pull-out strengths in excess of 31 tonnes.

### Features:

- Non-foaming
- Low odour
- Environmentally friendly
- Fire resistant
- Penetrates into cracks as small as 0.25mm
- Adheres to wet surfaces
- Surface to seam pumpability
- Inseam pumpability
- User friendly
- Reacts under water

### Packaging:

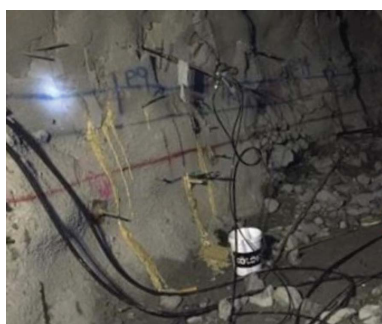
- 20L drums
- 1000L IBC's

### Application:

- Strata consolidation in Coal, Hard Rock and Tunnelling
- Stabilising of soft rock strata
- Consolidation of fractured rock, sand and gravel
- Water stopping in conjunction with other water stopping PUR's.
- Rock bolting applications
- Repair of underwater constructions
- Repair of concrete cracks.

### Technical Data – Jennchem 116T

	Component A	Component B
Colour	Clear, Light Straw	Dark Brown
Density @ 20 C	1.32 - 1.50 g/cm <sup>3</sup>	1.15 - 1.25 g/cm <sup>3</sup>
Flash Point AS2106.2-2005	>200 C	>200 C
Viscosity	120 - 350 mPas	50 - 300 mPas
Reaction data		
Start of reaction		30 - 80 sec
Tack free		>3.5 Mpa
Maximum exothermic temperature (mine safety test method TM003,section 4)		96 - 118C
Mechanical Properties		
Compressive Strength AS1012		>40 Mpa
Bending Strength AS/NZS 4456.5		>20 Mpa
Flex. Adhesive Strength		>5 Mpa





## JennSil - 2 Component Non - Foaming Urea Silicate Resin

A two component non-foaming urea silicate resin, JennSil provides a semi-flexible, rapid curing ground consolidating product, with the ability to penetrate cracks as small as .25mm wide. JennSil is pumped at a 1:1 ratio by volume and is designed to increase structural integrity in poor and broken ground including underwater applications.

### Features:

- Non foaming
- Fast cure times
- High strengths
- Fire resistant
- Penetrates cracks as small as 0.25mm
- Adheres to wet surfaces
- Long or short pumping distances
- Easy installation
- Reacts under water
- Can be used for rock bolt reinforcement.
- Assists with corrosion protection

### Applications:

- Consolidation of broken ground
- Water stopping in conjunction with other water stopping PUR's.
- Corrosion protection
- Bolt and Cable anchoring
- Underwater applications

### Packaging:

- 1000L IBC's
- 20L Drums

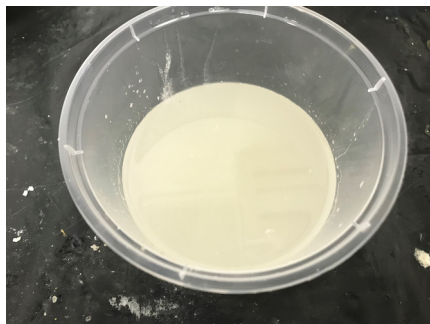
### Technical Data – JennSil

	Component A	Component B
Colour	Clear, Light Straw	Dark Brown
Density @ 20 C	1.40 - 1.50 g/cm3	1.15 - 1.25 g/cm3
Flash Point AS2106.2-2005	>200 C	>200 C
Viscosity	120 - 350 mPas	50 - 300 mPas
Reaction Data		
Gel Time		90 Seconds
Tack free		120 - 130 sec
Exothermic temperature		115 C
Mechanical Properties		
Compressive Strength		50 Mpa
Flexural Strength		16 MPa
Pull-out Shear Strength (Strength recorded using 32mm diameter rope thread – bolt to JennSil interface)		9.4 MPa

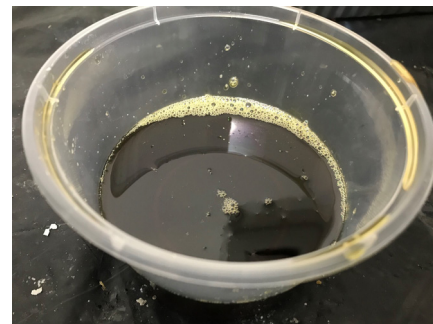
### Cured Sample



### Part A



### Part B



## Polymeric Chemicals

### JennThix 2 Component Thixotropic Urea Silicate Resin

JennThix – Thixotropic 2 component Urea Silicate Resin, is specifically designed to work in harmony with Jennmar rock bolts to provide a single pass bolt installation for underground mining and tunnelling. The fast cure times and ease of installation provide rapid development through poor and wet ground conditions.

#### Features:

- Non foaming
- Fast cure times
- High strengths
- Fire resistant
- Penetrates cracks >0.25mm
- Adheres to wet surfaces
- Long or short pumping distances
- Easy installation
- Reacts under water
- Fast anchoring and strength development provides safer underground working conditions.
- Assists with corrosion protection

#### Packaging:

- 25L drums
- 1000L IBC's

#### Application:

- Bolt and Cable anchoring
- Consolidation of broken ground
- Water stopping in conjunction with other water stopping PUR's.
- Corrosion protection



#### JENNTHIX

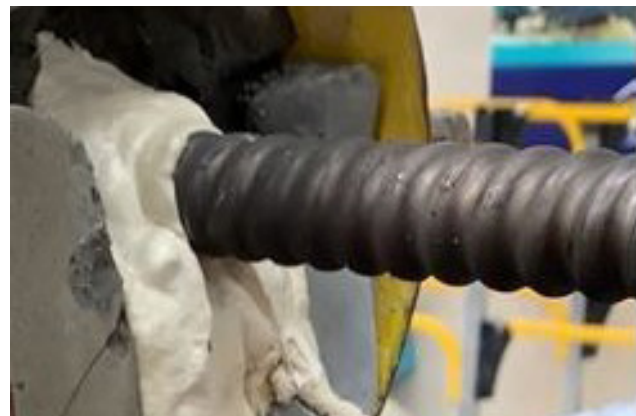
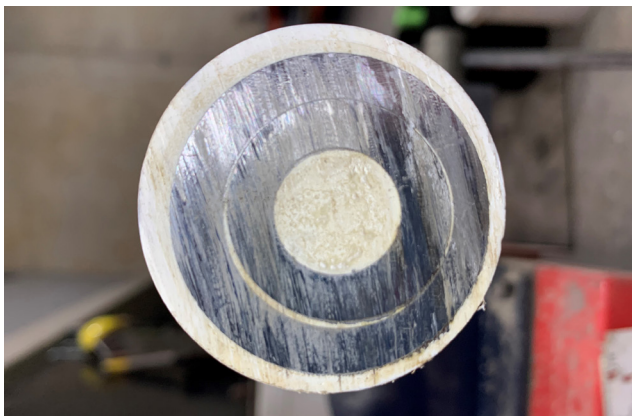
	Component A	Component B
Colour	Clear, Light Straw	Dark Brown
Density @ 20 C	1.40 - 1.50 g/cm <sup>3</sup>	1.15 - 1.25 g/cm <sup>3</sup>
Flash Point AS2106.2-2005	>200 C	>200 C
Viscosity	120 - 350 mPas	50 - 300 mPa <sup>s</sup>

#### REACTION DATA A:B = 1:1 BY VOLUME

Start of reaction	Instant after mixing
Tack free	90 - 100 sec
Maximum exothermic temperature	90 C

#### MECHANICAL PROPERTIES

Compressive Strength	1 Hour	47 Mpa
Flexural Strength	1 Hour	13 MPa
Elastic Modulus	1 Hour	670 MPa



## Polymeric Chemicals

# JennFoam - 2 Component High Expansion Phenolic Foaming Resin

Jennchem's JennFoam is a two-component phenolic resin pumped at 4:1 ratio by volume, to form a low strength, fast reacting, high expansion foam ideal for safe and efficient cavity filling applications

### Features:

- High expansion x 20
- Fast reaction and cure:  
Foam Start - instant  
Foam End 1-2 minutes  
Surface cure <10 minutes
- Compressive strength 100kpa
- Fire resistant
- Mixed at the point of application to aid in long distance pumping
- Can be used for non-rated ventilation control devices
- Ideal for the safe and efficient filling of cavities

### Applications:

- Fall recovery
- Cavity filling
- Consolidation of highly fractured strata
- Non-rated ventilation control devices

### Packaging:

- 1000L IBC's

### Technical Data – JennFoam

	Component A	Component B
Colour	Beige-Brown	Dark Red-Brown
Density @ 20 C	1.3 - 1.4 g/cm <sup>3</sup>	1.55 g/cm <sup>3</sup>
Flash Point AS2106.2-2005	>70°C	>70°C
Viscosity	200 - 400 mPas	<100 mPas
Storage	5°C	20°C
Shelf Life	12 months	12 months

### Reaction Data

Cured colour	White-Pink
Gel time	Instant foaming
Free expansion time	1 - 2 minutes
Exothermic temperature	63°C
Foam factor - Free expansion	15 - 20

**Cured Sample Picture 1**



**Cured Sample Picture 2**



**Cut Sample**



WWW.JENNCHEM.COM.AU

**Head Office**

40-44 Anzac Avenue, Smeaton Grange NSW 2567

Ph: +61 2 4648 7500

Fax: +61 2 4648 7555

**Queensland Branch**

50-52 Southgate Drive, Paget QLD 4740

Ph: +61 7 4952 8743

Fax: +61 7 4952 8777

**New South Wales Branch**

9 Gallipoli Street, Smeaton Grange NSW 2567

Ph: +61 2 4648 7551

Fax: +61 2 4648 7555

**Perth Branch**

84 Furniss Road, Lansdale WA 6065

Ph: +61 8 9408 9900

Fax: +61 8 9408 9999



**JENNCHEM**



NOTE: Please confirm that you have the latest version of this catalogue by visiting [www.jennchem.com.au](http://www.jennchem.com.au) before using any of the technical specifications contained herein.

112022F